



# **How to Change a Uniview Camera's Network Settings?**

Title:	How to Change a Uniview Camera's Network Settings?	Version:	V1.1
Product:	IPC	Date	9/26/2023

# How to Change a Uniview Camera's Network Settings?

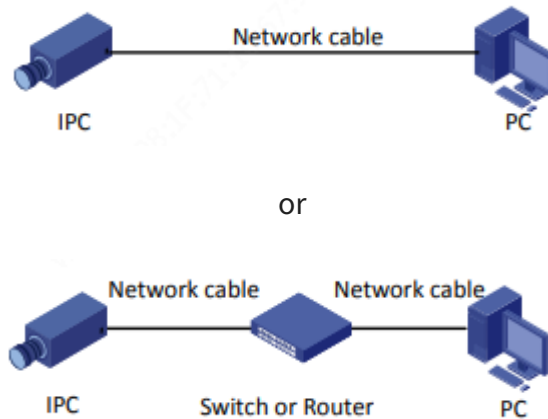
## Description

**Note:** This method is applicable to most scenarios. If the method cannot solve your problem, it is recommended to consult our Tech Support Team.

[https://global.uniview.com/Support/Service\\_Hotline/](https://global.uniview.com/Support/Service_Hotline/)

## Preparation

Connect the camera to the network so that it can communicate with other devices.



## Operating Steps

**Change from the camera's web interface directly.**

**Step 1** Log into the **camera's web interface**.

**Step 2** Configure the camera's Ethernet parameters under **Setup>Network>Network**

There are generally two ways for **the IP address of a camera** to be assigned:

**Static** and **DHCP**.

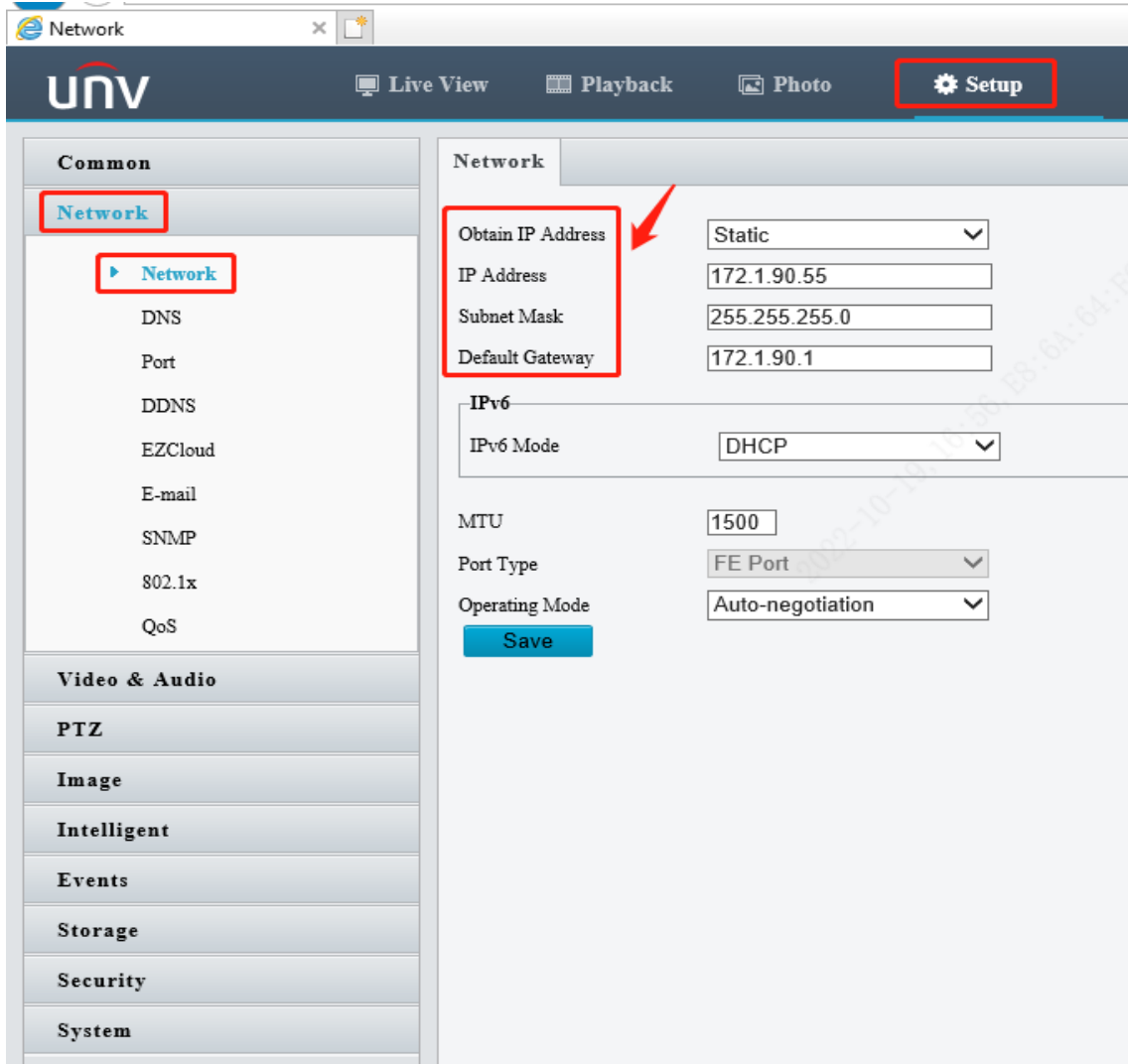
**Note:**

**Static Address:** The device is assigned an IP address manually (Enter the IP address, subnet mask, and default gateway. Make sure that the IP address of the camera is unique in the network).

**DHCP (Dynamic Host Configuration Protocol):** is enabled by default. If a DHCP server is deployed in the network, the camera can automatically obtain an IP address from the DHCP server.

You can also change the other parameters such as MTU here.

Title:	How to Change a Uniview Camera's Network Settings?	Version:	V1.1
Product:	IPC	Date	9/26/2023



**Note:** After you change the IP address, you need to log in again with the new IP address.

## Change from EZTools

**Note:** Before you start, make sure your devices and the computer running this tool are connected by a network.

**If you are using EZTools 3.0, follow the guide below:**

**Note:** When you log in for the first time or when the device list is empty, the tool will automatically search for devices on the same network segment as the PC and then list the discovered devices.

**Step 1** Add the camera to management.

**Step 1.1** Click **Search**. A page as shown below appears. The devices on the same network segment as the computer are listed.



Title:	How to Change a Uniview Camera's Network Settings?	Version:	V1.1
Product:	IPC	Date:	9/26/2023

Device Name	Model	IP	Port	Version	Serial No.	MAC	Status	Operation
IPC3615LE-ADF28K-G	IPC3615LE-AD...	172.1.90.5	80				● Not Added	+ 🔑
HC121@TC-08S-Z	HC121	172.1.90.11	80				● Not Added	+ 🔑

**Note:** The search page always appears when you log in for the first time or when no devices have been added.

**Step 1.2** (Optional) Set search conditions including network segment, device type, and status, and then click **Search**.

**Step 1.3** Choose a way to add devices.

**Add devices in batches:** Select devices you want to add, and then click **Batch Add**.

**Add one device:** Click the corresponding in the **Operation** column.

**Step 1.4** Confirm the username and password and then click **OK**. If you changed the username/password of a device before successfully adding it to the tool, the tool will remember the new username/password, and will use them when you add the device again next time.

**Step 1.5** The tool displays a message after completing the adding. If a device failed to be added, click **View Failure Details** to see the cause of failure. You can modify settings in the list and then import again.

**Step 2** Modify the network parameters of a device manually or by using Dynamic Host Configuration Protocol (DHCP).

**Step 2.1** Choose a method to open the Modify IP page.

Select the device, and then click **Modify Network Parameters**.

Click **Search**. On the **Search to Add** page, select the device for which you want to modify IP, and then click **Modify Network Parameters**.

Title:	How to Change a Uniview Camera's Network Settings?	Version:	V1.1
Product:	IPC	Date:	9/26/2023

Modify IP (172.1.90.5)

Mode:  Static  DHCP

New IP: 172 . 1 . 90 . 5

Subnet Mask: 255 . 255 . 0 . 0

Gateway: 172 . 1 . 0 . 1

IP(old)	IP(new)	Subnet Mask	Gateway	Username	Password	Device Status
172.1.90.5	172.1.90.5	255.255.0.0	172.1.0.1	admin	••••••	Logged in

**Step 2.2** Choose **Static** or **DHCP** on the **Modify IP** page.

**Static:** Enter the IP (for multiple devices, enter an IP address range), subnet mask, and gateway.

**DHCP:** IP address will be assigned dynamically.

**Step 3** Click **OK**. Check the **Device Status** column to see whether the modification is successful.

**If you are using EZTools 2.0, follow the guide below:**

**Step 1** Install **EZtools 2.0** on your computer and open it. Check the camera that you need to change the network settings with.

**Step 2** Click **Refresh** to search for the camera, **check IPC** under **Device Cfg.** to find the camera in the local network.

Total 9 device(s)

Refresh Search Setup

Device Cfg. Login Modify Password IP Modify IP Device Config

Device Name	IP	Model	Version	Serial No.
[blurred]	172.1.90.4	[blurred]	[blurred]	210 [blurred]
IP [blurred]	172.1.90.55	IPC6322SR-X33UP-D	[blurred]	210 [blurred]
HC121@TC-08S-Z	172.1.90.70	HC121	[blurred]	210 [blurred]
IPC675LFW-AX4DUPKC-VG	172.1.90.115	IPC675LFW-AX4DUPKC-VG	[blurred]	210 [blurred]
IMCP	172.1.90.203	IPC36145B-ADF28KM-10	[blurred]	210 [blurred]
IPC868ER-VF18-B	172.1.90.223	IPC868ER-VF18-B	[blurred]	210 [blurred]
IMCP	172.1.90.235	IPC9312LFW-AF28-2X4	[blurred]	21 [blurred]
IPC672LR-AX4DUPKC	192.168.0.105	IPC672LR-AX4DUPKC	[blurred]	21 [blurred]
IPC322LR3-VSPF28-D	192.168.1.12	IPC322LR3-VSPF28-D	[blurred]	21 [blurred]

**Step 3** Click **Login** and then enter the **login credentials of your camera**. Click **OK**.

Title:	How to Change a Uniview Camera's Network Settings?	Version:	V1.1
Product:	IPC	Date	9/26/2023

Login (172.1.90.55)

Username:

Password:

Note: Please enter the correct username and password.

**OK** Cancel

**Step 4** Click **Modify IP**, and then you can **enter the camera's New IP, Subnet Mask** and **Gateway**. Don't forget to click **OK** to save these settings.

Modify IP (172.1.90.55)

New IP:

Subnet Mask:

Gateway:

IP(old)	IP(new)	Subnet Mask	Gateway	Username	Password	Operation Status
172.1.90.55				admin	ar	Logged in

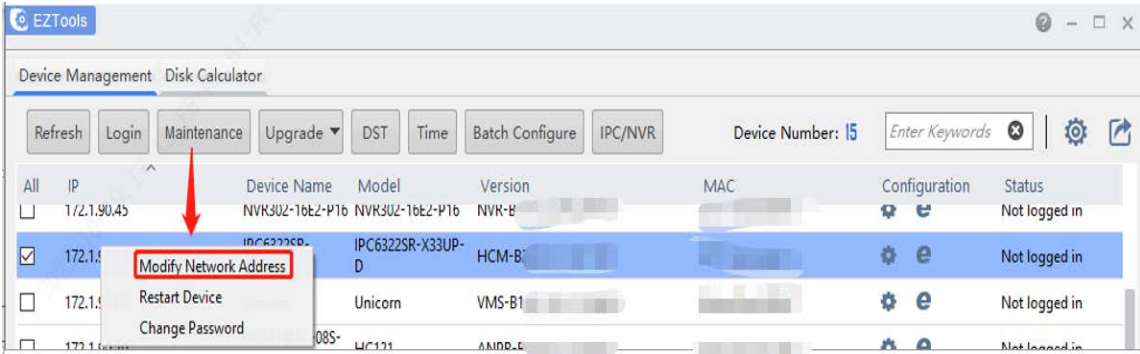
**OK** Cancel

**If you are using EZTools 1.0, follow the guide below:**

**Step 1** Install **EZtools 1.0** on your computer and open it. Check the camera that you need to change the network settings with.

**Step 2** **Right click the mouse** and then click **Modify Network Address**.

Title:	How to Change a Uniview Camera's Network Settings?	Version:	V1.1
Product:	IPC	Date	9/26/2023



**Step 3** Enter the **IP Address**, **Subnet Mask** and **Gateway**, **Username** and **Password** of the camera manually and then click **OK**.

